



**LANDSCAPE CONCEPT**

- 1** The focus of this small park should be the fantastic view the water. By shifting the location and size of the main plaza circle out to the waters edge, the plaza is suddenly transformed into a destination spot instead of merely the intersection of trail heads. Due to preservation requirements, the existing trees at the waters edge cannot be removed. However, they should be limbed-up to a minimum of 7' to maximize views of the water.
- 2** This small plaza marks a transition of the trail system from an urban setting to a more naturalistic one. The rectangle of pavement acts as a visual 'band-aid' to join the two pieces together. This literal connection does two things: it enhances way-finding for the user to continue on the trail, providing better of continuity between the trails, and it acts as a pedestrian crossing. A major change of pavement and texture is a proven signal to a driver that they are entering a special pedestrian crossing (It will, of course, be marked with proper ADA requirements and signage).
- 3** The major landscape elements should be concentrated on the East side of the plaza and pedestrian crossing to block views of the sewer facilities.

**BENCH CONCEPT**

- 4** The optimal location of a sculptural bench is at the waters edge in order to heighten the sense of destination of the plaza. The bench should be double-sided. Due to environmental factors such as salt-water, potential storm waves and wind, the bench should be made from stone. While the material will be different, it should possess the same design language as the benches on the other two sites.

**COST**

Our proposal does not include this site (bench or landscape) as part of the design program, and a cost estimate has not been prepared. We believe this site needs further landscape development before an appropriate piece can be located here, and therefore it should be a separate commission.



**NARRATIVE**

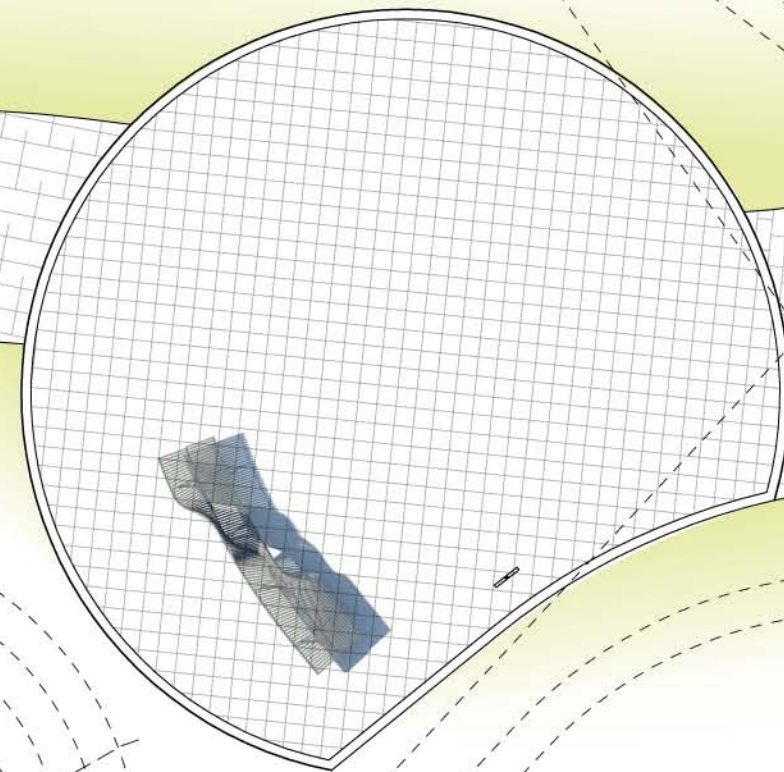
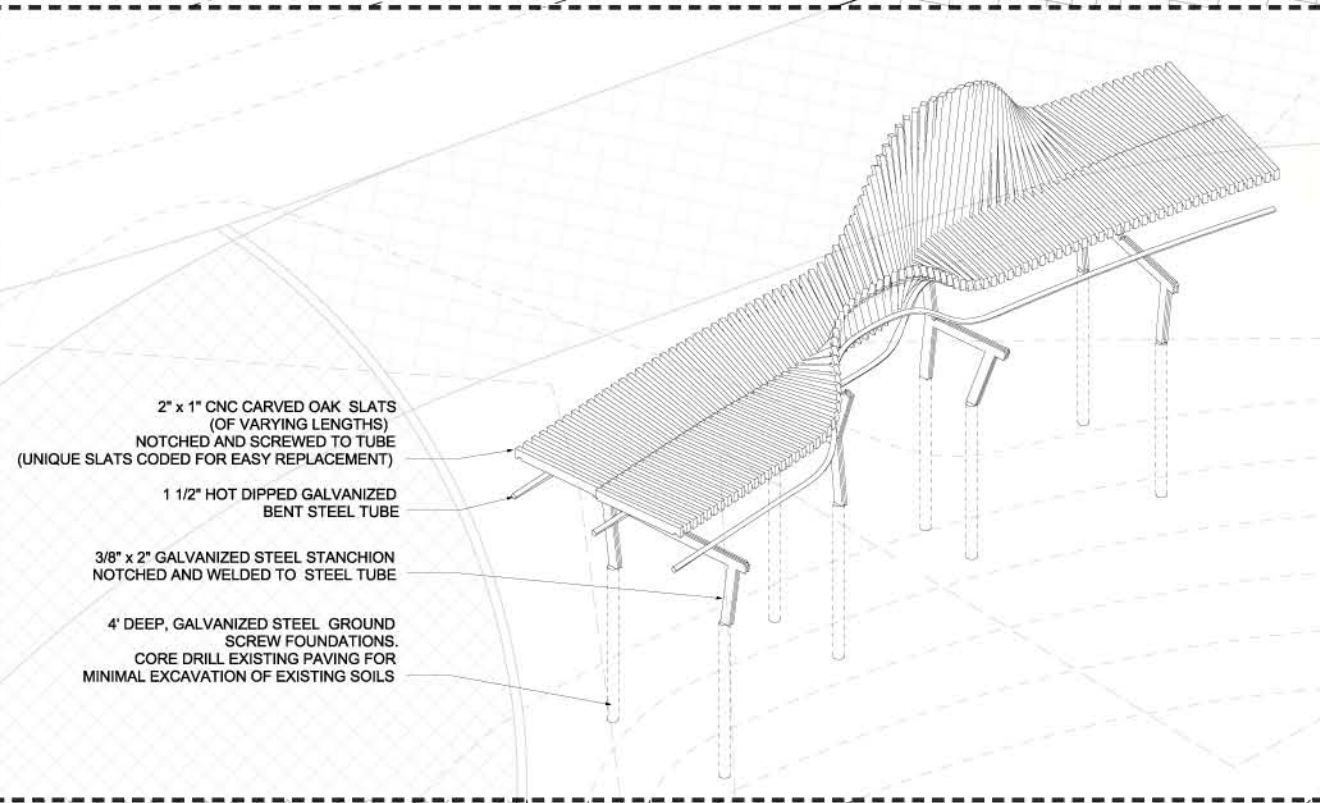
The intimacy of this very small plaza required a more sensitive approach to how and where people sat in this space. After discussing the plaza with the Committee members on-site, and amongst ourselves, we realized that a bench which faced in two directions was the most desirable solution.

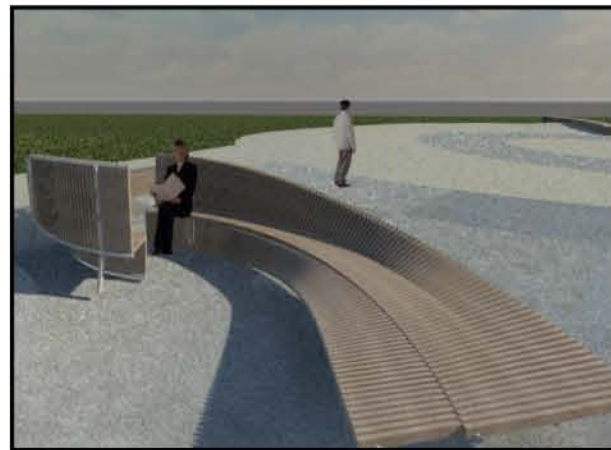
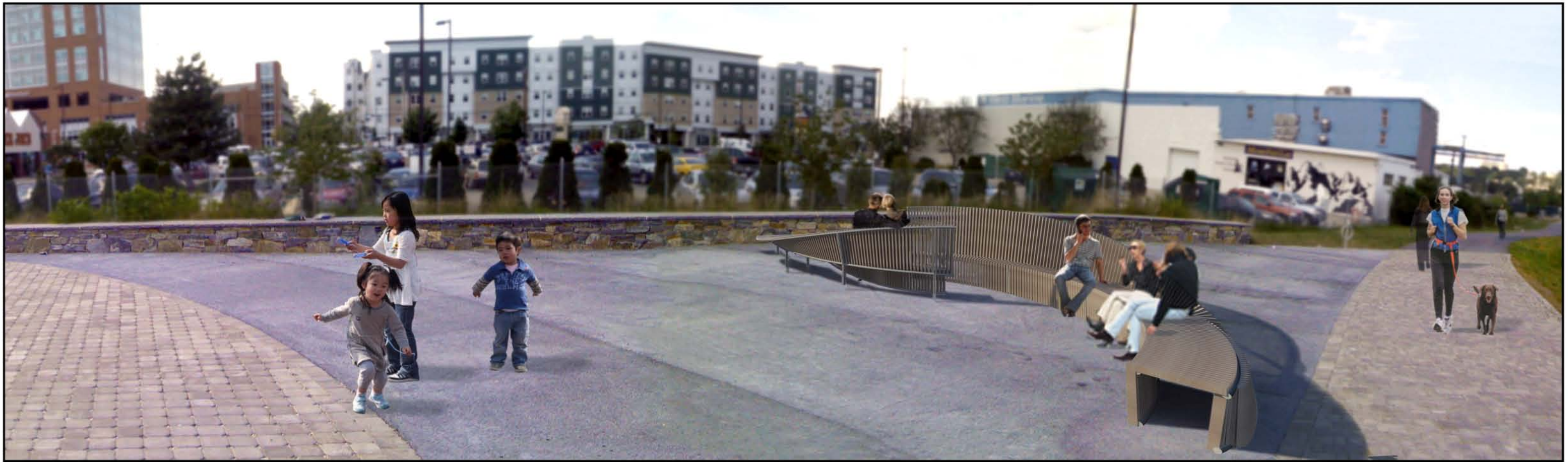
By using the same language of folding and transforming, we developed a doubled-side bench delicately twists, creating two distinct sides on which to sit. In one direction, the bench faces out toward the beautiful downtown Portland skyline. In the other direction, the bench fronts the main part of the plaza space and faces in the general direction of the adjacent intersection. The ends of the bench become backless, further allowing for seating in any direction.

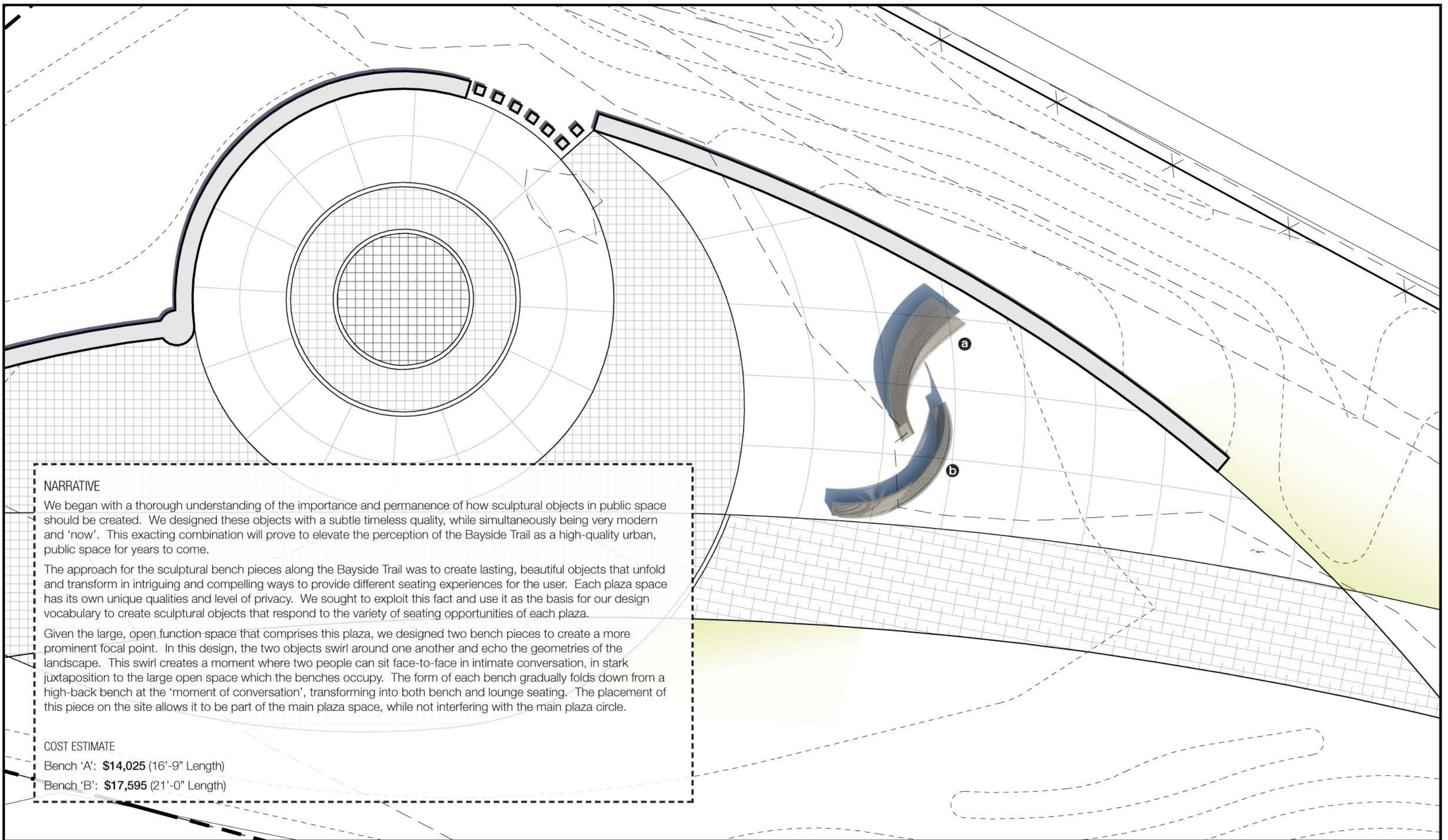
The subtle curve of the bench in plan view echoes the curvature of the plaza, and the rise and fall of the twisting bench-back speaks to the topographic quality of the landscape mounds without being contrived. The intricate transition of the back from one side to the other provides that moment of contemplation that all art should embody.

**COST ESTIMATE**

**\$10,880** (13'-0" Length)







**NARRATIVE**

We began with a thorough understanding of the importance and permanence of how sculptural objects in public space should be created. We designed these objects with a subtle timeless quality, while simultaneously being very modern and 'now'. This exacting combination will prove to elevate the perception of the Bayside Trail as a high-quality urban, public space for years to come.

The approach for the sculptural bench pieces along the Bayside Trail was to create lasting, beautiful objects that unfold and transform in intriguing and compelling ways to provide different seating experiences for the user. Each plaza space has its own unique qualities and level of privacy. We sought to exploit this fact and use it as the basis for our design vocabulary to create sculptural objects that respond to the variety of seating opportunities of each plaza.

Given the large, open function space that comprises this plaza, we designed two bench pieces to create a more prominent focal point. In this design, the two objects swirl around one another and echo the geometries of the landscape. This swirl creates a moment where two people can sit face-to-face in intimate conversation, in stark juxtaposition to the large open space which the benches occupy. The form of each bench gradually folds down from a high-back bench at the 'moment of conversation', transforming into both bench and lounge seating. The placement of this piece on the site allows it to be part of the main plaza space, while not interfering with the main plaza circle.

**COST ESTIMATE**

Bench 'A': **\$14,025** (16'-9" Length)

Bench 'B': **\$17,595** (21'-0" Length)